

AUSPAN

**WA's LEADER IN THE DESIGN & CONSTRUCTION
OF STEEL FRAME SHEDS AND BUILDINGS**



**CASE STUDY #183 - Impressive New Work-
shop for Hopetoun Men in Sheds**



CASE STUDY #183

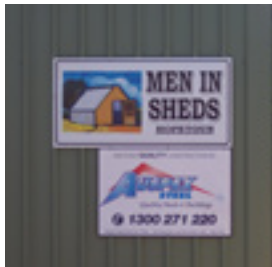
Impressive New Workshop for Hopetoun Men in Sheds

AUSPAN Scope Outline

Value Bracket | \$100-250K

Manufacture | 4.5 weeks

Site Time | 5 Days



28m(l) x 14m(w) x 4m(h) Custom designed workshop for the Hopetoun Men in Sheds Community

CLIENT BRIEF

The Hopetoun Men in Sheds organisation approached Auspan as the design & construct specialists for their project. They needed a new workshop to carry out their community projects and facilitate their daily activities.

AUSPAN'S SOLUTIONS

AUSPAN worked with the committee to design and construct a workshop facility that would provide a quality workplace for all the members.

Challenges

Being a community project funded by a government grant, AUSPAN needed to complete the shed package including concrete floor within a strict budget. This was achieved with careful planning and using AUSPAN's cost effective designs, without compromising on the quality of the building.

Features

- ▶ Shed has been designed to allow future extensions if required.
- ▶ Custom span & bay sizing to accommodate the required layout.
- ▶ Heavy Structural Columns & RHS trusses are strong and easy to mount or hang equipment such as welding booms and winches from.

CASE STUDY #183

Impressive New Workshop for Hopetoun Men in Sheds



IN OUR CUSTOMER'S

OWN WORDS...

What a pleasure to deal with AUSPAN, Caleb in Sales, Gavin the Project Manager, the office staff and the on site construction crew and concrete contractors. All these people displayed extreme professionalism throughout every stage of the project.

AUSPAN were the only company that could fulfil our Project specifications supplying the best quality Australian Steel products as requested. We are so impressed that AUSPAN are now contracted to construct a recreation, meeting room, and kitchen adjoined on the front of our Mens Shed Workshops. Well done AUSPAN.

Kym White (Acting Secretary) on behalf of HMIS



IN AUSPAN'S

OWN WORDS...

Very good job, satisfying being involved with a project that is beneficial to the whole community.

Gavin Richardson – Project Manager

I enjoyed working with the team at Hopetoun Men in Sheds - is very rewarding to see the shed in operation with an impressive range of machinery and tools for completing projects. A great asset to the community.

Caleb Richardson - Salesperson

AUSPAN

**WA's LEADER IN THE DESIGN & CONSTRUCTION
OF STEEL FRAME SHEDS AND BUILDINGS**



**CALL TODAY FOR YOUR
DESIGN & QUOTE
1300 271 220**

 SALES@AUSPANGROUP.COM.AU
 AUSPANGROUP.COM.AU
Builders Reg 12984

